

# MUSIC IN THE WORKPLACE

Licensing Enquiries 1300 852 388 [licence@apra.com.au](mailto:licence@apra.com.au) [www.apraamcos.com.au](http://www.apraamcos.com.au)

APPLY NOW

This licence covers the use of music in businesses, State and Federal agencies, head and state/branch offices, factories, manufacturing and light industry, mines and heavy industry.

## Why do I need a licence?

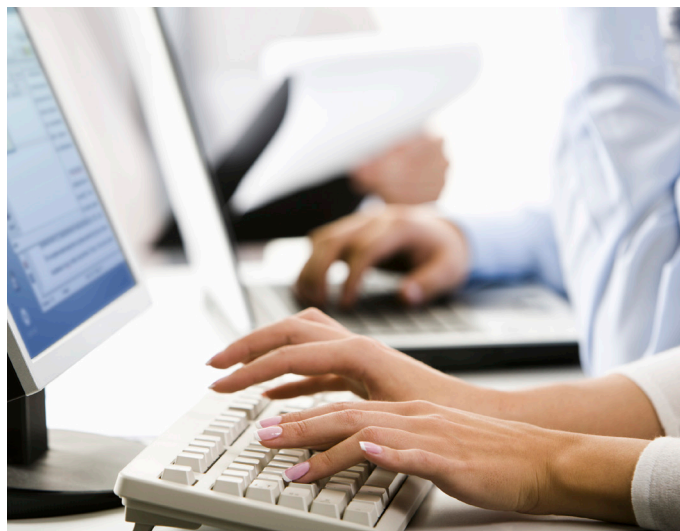
If you use copyright music in your workplace you need permission (a licence) from the authors of that music. By 'use' we mean anything from playing music in the office, warehouse and similar areas, employees listening to music at their desks, using music at company functions, parties and events, in staff training sessions and other presentations, playing music in the reception or front-of-office areas open to the public, and using music on hold. You can also make copies of music for any of these uses. Securing an APRA AMCOS licence will meet your legal obligations under the Copyright Act.

## Who is APRA AMCOS?

APRA AMCOS (which stands for the Australasian Performing Right Association and the Australasian Mechanical Copyright Owners Society) is a non-profit organisation which licenses rights in music on behalf of 95,000 members linked with 170 affiliated similar organisations worldwide. We pay your annual licence fees directly back to the songwriters, composers and publishers who own the music you're using. Legal alternatives to securing an APRA AMCOS licence are on page 3.

You can get independent information at [www.copyright.org.au](http://www.copyright.org.au).

You may need other licences if you have music uses not mentioned above such as **ticketed live performance open to the public**.



## Music works for your business

Research shows playing music in the office or factory can help make staff happier and more productive.



From [musicworksforyou.com](http://musicworksforyou.com)



## How long does the licence last?

Licences are ongoing and renew each year. If you no longer need our licence (e.g. if you cease to use music), you can terminate with one month's notice to us.

## When do I pay?

You pay when you first take out the licence, then just once a year. If your APRA AMCOS licence fee is more than \$500, we will put you on quarterly payments (with no interest). Extended payment terms are available. To find our more contact our Customer Support Team on 1300 852 388.

## What music can I use if I have an APRA AMCOS licence?

We've done the hard work for you so our licence allows you to use **virtually any commercially released music** from anywhere around the world.

# MUSIC IN THE WORKPLACE

Licensing Enquiries 1300 852 388 licence@apra.com.au www.apraamcos.com.au

## How much does it cost per year?

### MUSIC IN THE WORKPLACE ([click here](#) to access more information on when you need this licence)

Public Performance	\$0.95 per employee. Min \$62.79
Reproduction/Copying	\$0.95 per employee. Min \$62.79

Calculated on actual data you provide.

### BACKGROUND MUSIC

	Up to 150m <sup>2</sup> floor space	150m <sup>2</sup> - 499m <sup>2</sup> floor space	500m <sup>2</sup> - 999m <sup>2</sup> floor space	1000m <sup>2</sup> - 1999m <sup>2</sup> floor space	2000m <sup>2</sup> - 4999m <sup>2</sup> floor space	More than 5000m <sup>2</sup>
where music is audible						
<b>Tier 1:</b> One device (radio or TV)	\$78.06	\$91.06	\$130.09	\$195.11	\$364.18	Contact APRA AMCOS
<b>Tier 2:</b> One device including: - CD or DVD player - PC, tablet or MP3 player - background music service - OR digital music service	\$130.09	\$156.08	\$234.14	\$390.20	\$650.34	Contact APRA AMCOS
<b>Tier 3:</b> Between two to four devices and/or a multi-channel device of up to four streams	\$208.10	\$299.15	\$442.23	\$676.34	\$1,105.54	Contact APRA AMCOS
Five or more devices	Contact APRA AMCOS	Contact APRA AMCOS	Contact APRA AMCOS	Contact APRA AMCOS	Contact APRA AMCOS	Contact APRA AMCOS

### MUSIC ON DEVICES

	Up to 500 tracks	Up to 1000 tracks	each additional group of 500 tracks thereafter
Required when using digital/streaming services, or reproducing/copying from one material form to another	\$156.08	\$260.11	\$104.05

Calculated on actual data you provide.

### MUSIC ON HOLD

	1-5 external phone lines	6-10 external phone lines	More than 10 external phone lines
Playing through phone system	\$155.75	\$245.94	Contact APRA AMCOS
Copying for phone system	\$38.94	\$61.49	Contact APRA AMCOS

Calculated on actual data you provide.

Rates include 10% GST and are not negotiable. Fees will increase by CPI each year. Licence fees are renewed and may be reassessed each year to take into account any changes in your music use.

### Example.

An insurance company has background music in the canteen, office workers playing music at their desks, multimedia presentations at company functions and music on hold playing the local radio station. It has 2,154 full time equivalent (FTE) employees and 30 external phone lines.

The Music in the Workplace combined public performance fee and reproduction copying fee at \$1.90 per employee is applied for a licence payment of \$4,092.60. In addition, the Music on Hold licence fee total is \$860.81. The total licence fee for the year is \$4,953.41.

## What does **APRA AMCOS** do with my fees?

We care about ensuring the licence fees you pay are distributed in the most economical and accurate way possible. We deduct our expenses from the revenue we receive and then distribute your fees to the songwriters, composers and music publishers whose works we have licensed to you.

This means for every dollar we collect, about 86 cents is returned to music creators. At 13.78 per cent, our operational costs compare very favourably to organisations providing the same service overseas.

Fees from this licence go into royalty pools and are distributed according to data on music use from **radio stations**, **ARIA** (Australian Recording Industry Association) **chart placings** and **music video channels**.

## Will the rates change?

Apart from yearly CPI reviews, APRA AMCOS will not increase or change licence fees without first consulting the industry.

## Comments and complaints

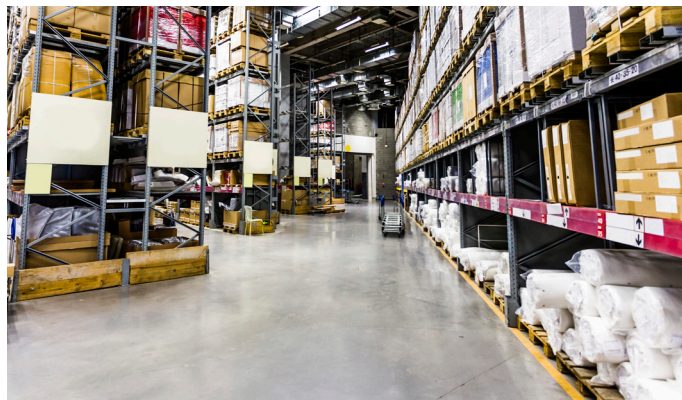
We care about the service we give you and we welcome your feedback. If you'd like to comment on our service, email [licence@apra.com.au](mailto:licence@apra.com.au).

Read about our [formal complaints procedure here](#).

## Disputes

If you do not agree with how we apply this licence to your business, with our fees, or with any of our services, you can use our convenient dispute resolution system. Email [disputes@apra.com.au](mailto:disputes@apra.com.au) or call 02 9935 7900.

Read about our [dispute resolution system here](#).



**APRA AMCOS (the Australasian Performing Right Association and the Australasian Mechanical Copyright Owners Society) is a rights management organisation which licenses performing, communication and reproduction rights in music on behalf of 95,000 members and 145,000 licensees with 170 affiliated organisations worldwide.**

*This fact sheet is a guide only. Refer to the licence for full terms and conditions.*



## Do I have to go through **APRA AMCOS** to play music in my business?

There are a couple of ways to get permission to play music in your business.

**APRA AMCOS Licence.** Our licence provides the easiest and most cost-effective way to access public performance rights to the world's repertoire of music.

**Direct Licensing.** Our members may license their music directly to music users, including for live performances and you are free to discuss this with them. You can find more details on our website under [Dealing directly with copyright owners](#).

## Re-recorded or "PPCA-Free" Music.

Some music suppliers re-record popular tracks using session musicians and singers. Although the product is not the original recording, you still need our licence because the lyrics and melodies are not changed and remain represented by us.

**Royalty-Free Music.** Some music suppliers offer recordings of music they say is outside our repertoire and so does not need our licence. If you wish to use a "Royalty-Free" music product, please contact us and we will check whether any extra licences are needed.

## Other licences

If you are using sound recordings controlled by PPCA contact PPCA at [ppca.mail@ppca.com.au](mailto:ppca.mail@ppca.com.au) (02) 8569 1111.



## Need more information?

Contact our Customer Support Team on 1300 852 388 or email [licence@apra.com.au](mailto:licence@apra.com.au).